

# Research Journal of Pharmaceutical, Biological and Chemical Sciences

## Segmentation and Optimization of Blebs In Human Embryonic Stem Cell Videos.

S Johan Michaederrick, K Sriram Varma, and S Yogalakshmi.

ECE Department, Sathyabama University, Tamil Nadu, India.

### ABSTRACT

The important role of indicating and determining the health and growth of a human embryonic stem cell (HESC) is taken by blebbing. There are two types of blebbing, they are dynamic and apoptotic. This paper analyses segmentation methods for bleb extraction in HESC videos and introduces a bio-inspired score function to improve the performance in bleb extraction. Full bleb formation consists of bleb expansion and retraction. The size of the bleb changes dynamically in each frame and process. Therefore, adaptive parameters are needed for each segmentation method. Consecutive frames provide adaptive parameters for bleb extraction in videos as the change of area and orientation between consecutive frames helps us derive the score function of blebbing.

**Keywords:** segmentation, optimization, blebs, embryonic, stem cells

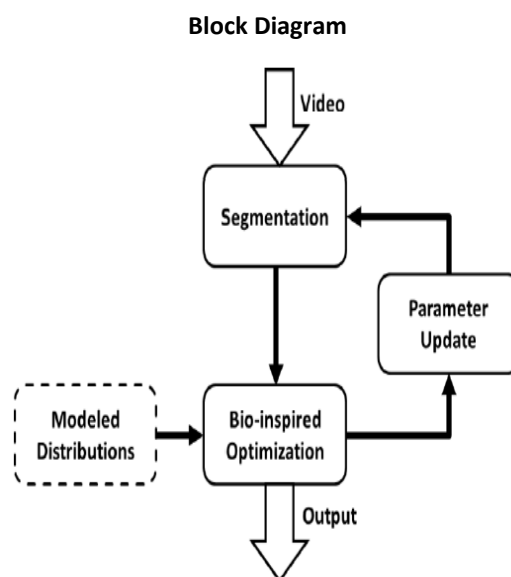
*\*Corresponding author*

## INTRODUCTION

Blebs are part of the human embryonic stem cell, and stem cells are the unspecialized cells which are found in the human body. As we know that blebbing is an indicator which helps in determining the health of the human embryonic stem cell. It is important to know the condition of the bleb which is present in the stem cell and therefore to know the condition of the bleb we segment the bleb, optimize, analyse all these can be done by recording the human embryonic stem cell video through a microscope. Blebs can also be used to find new medicine for a particular unidentified parasite which is present in a human body. Learning and acquiring the condition of the bleb can be useful in developing the human embryonic stem cell without any disorder.

## RELATIVE WORK AND CONTRIBUTION

Proposed paper is a bio-inspired optimization method for the segmentation of dynamic blebs. The proposed approach adapts parameters for images in the bleb formation process expansion and retraction. The parameters to analyse the bleb are derived directly from the distributions of change in area and orientation between consecutive blebs.



## TECHNIQUES USED

The technique that has been used in this paper is that we used three modules in order to optimize, segment and analyse. Those modules are :

1. Cuckoo search
2. Active contour
3. Neural network

### Cuckoo search

Cuckoo search is an algorithm which was developed in the year 2009 by Xinshenyeang and Suash Deb. Cuckoo search algorithm was inspired by the cuckoo bird. As we know that the cuckoo bird lays its eggs in the nests of the other birds, if the host bird finds that there is another bird's egg in the nest it will either abandon the nest and make a new nest or the host bird will push the cuckoo eggs out of the nest. As such in algorithm.

### Active contour

To indicate the exact position of a border or boundary of an object in a possible 2D image Active contour model is used. Active contour model framework is also called as snake. This snake technique matches

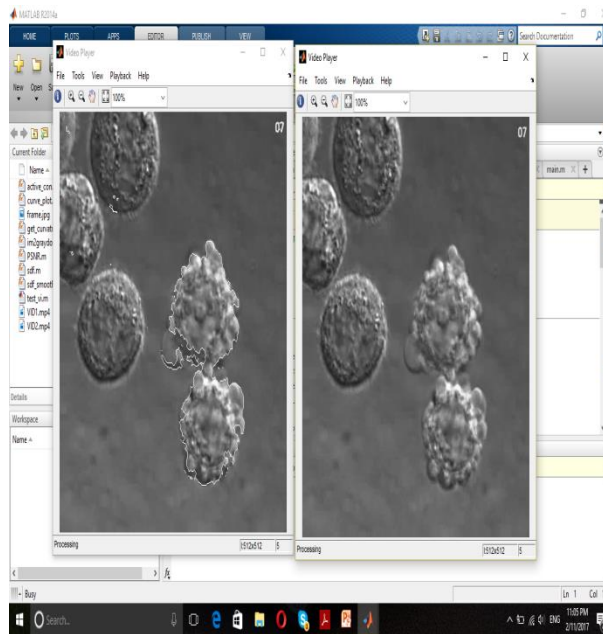
a deformable model to an image by energy minimization. A discrete approach of this technique is active shape model or active contour.

**Neural network**

Neural network is used for video classification regression , clustering , dimensionality time-series forecasting and dynamic system modelling and control. In this particular paper we are using neural network as classifier to compare the parameters of the blebs present in the human stem cell video with the parameters that is derived from the cytoplasmic properties of the blebs that has been studied

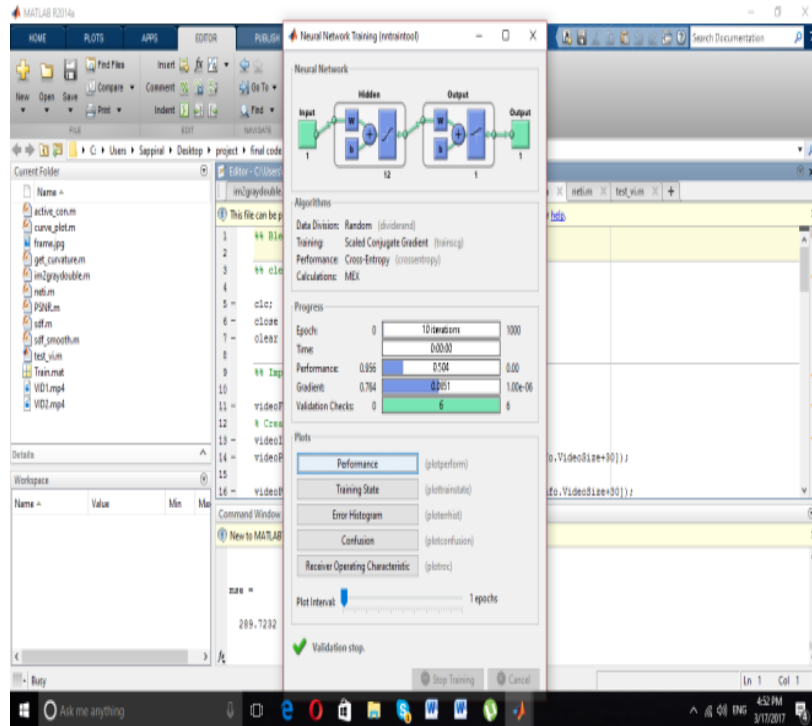
**Simulation:**

The simulation has been done in Matlab that is matrix laboratory which is a widely known software tool for processing of images and videos using programming



**Active contour and cuckoo search:**

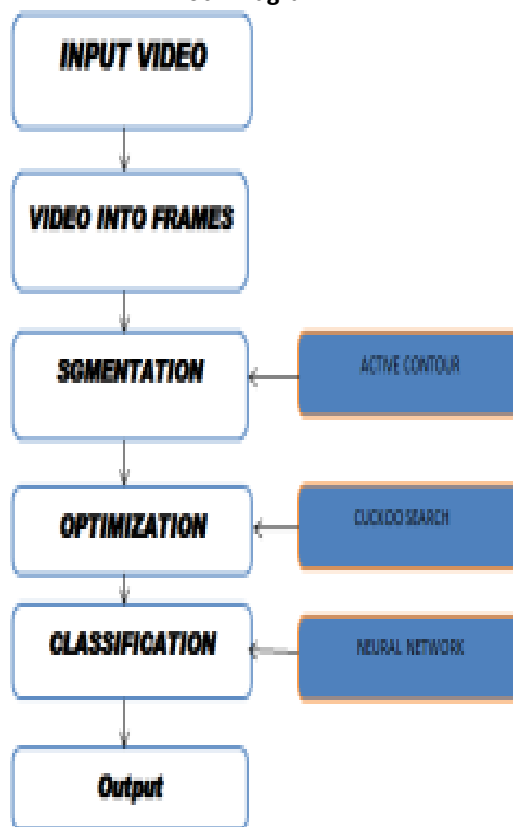
In this step we can clearly see that active contour and cuckoo search has been applied in the output video. The window on the right is the input video of the human embryonic stem cell and the window on the left is the output video. The visible outline around the edges of the human embryonic stem cell is the application of of active and contour and cuckoo search.



**Neural Network**

In this step we can see that the classification and the comparison is being done by the Neural Network. As in the window there are various parameters displayed after the comparison with the input parameters that is being obtained from active contour and cuckoo search

**Block Diagram**



## CONCLUSION

The growth of technology has enabled the entire human race to reach a new level of potentiality and possibility and this paper proves us that with the use of software development we can use it in the medical field. Therefore we have segmented the bleb from human embryonic stem cell to help find researchers new medicines.

## REFERENCES

- [1] Suraj Narayan Mali” Stem Cell Therapy: A Novel Treatment for Various Diseases and Injuries”,international journal of pharmacy and pharmaceutical research,February 2016 Vol.:5, Issue:3
- [2] Zengrong Zhu, and DanweiHuangfu”Human pluripotent stem cells: an emerging model in developmental biology” Developmental Biology Program, Sloan-Kettering Institute,140, 705-717 (2013).
- [3] Moustafa M, El Khatib, SeigaOhmine, Egon J. Jacobus, Jason M. Tonne Salma G. Morsy, Sara J. Holditch, Claire . Schreiber, Koji Uetsuka, Noemi Fusaki,”Tumor-Free Transplantation of Patient-Derived Induced Pluripotent Stem Cell Progeny for Customized Islet Regeneration” Stem Cells Translational Medicine 2016;5:694–702.
- [4] Jeremy S. Toma,1XBasavaraj C. Shettar, Peter H. Chipman, Devanand M. Pinto, Joanna P. Borowska “Motoneurons Derived from Induced Pluripotent Stem Cells Develop Mature Phenotypes Typical of Endogenous Spinal Motoneurons” The Journal of Neuroscience, January 21, 2015 • 35(3):1291–1306.
- [5] Ping Zhao1, Zhiwei Luo, Weihua Tian, Jiayin Yang, David P Iba´ n ez1, Zhijian Huang “Solving the puzzle of Parkinson’s disease using induced pluripotent stem cells” Experimental Biology and Medicine 2014; 239: 1421–1432.
- [6] S. Irion, M.C. Nostro, S.J. Kattman, and G.M. Keller”Directed Differentiation of Pluripotent Stem Cells: From Developmental Biology to Therapeutic Applications” Cold Spring Harbor Symposia on Quantitative Biology, Volume LXXIII.
- [7] JunWang, Bihua Zhou, and Shudao Zhou”An Improved Cuckoo Search Optimization Algorithm for the Problem of Chaotic Systems Parameter Estimation” ,Hindawi Publishing CorporationComputational Intelligence and NeuroscienceVolume 2016.
- [8] VenkataVijayaGeeta. Pentapalli, Ravi Kiran Varma P” Cuckoo Search Optimization and its Applications: A Review”, International Journal of Advanced Research in Computer and Communication Engineering, Vol. 5, Issue 11, November 2016.